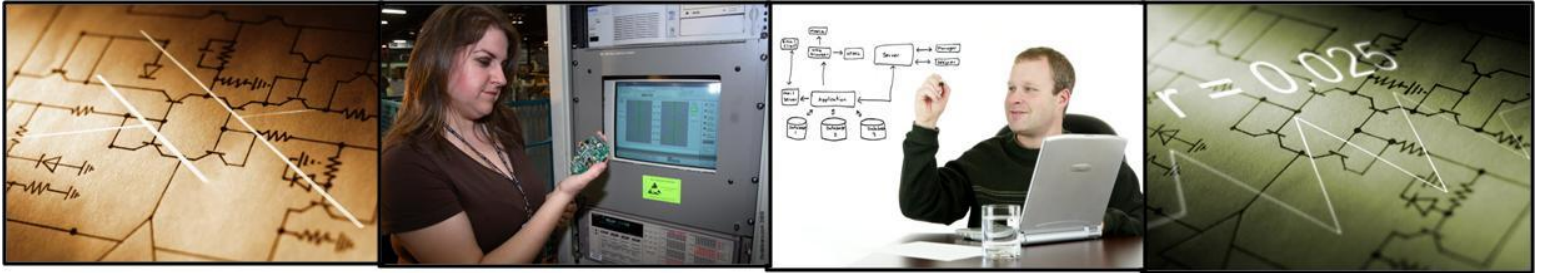
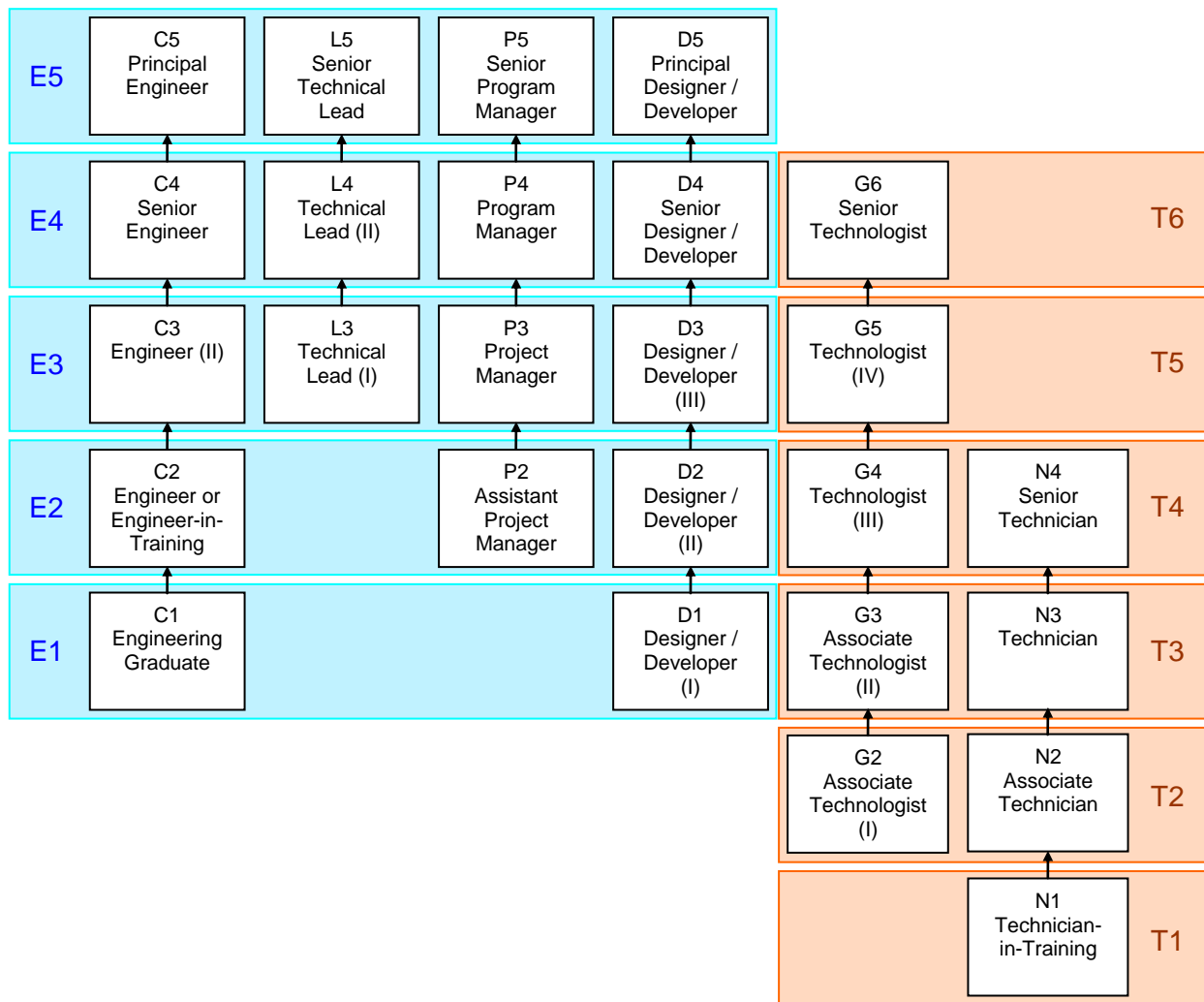




## Engineering Career Streams



**Engineering Careers Streams Diagram**



### **Engineering Stream**

This is the purely engineering or technical stream. As engineers progress through this stream they become increasingly responsible for providing expert technical input to projects and utilising more innovation and creativity to solve increasingly difficult and diverse technical problems.

### **Technical Leadership**

This is the technical management stream. As engineers progress through this stream they become responsible for the technical output of larger teams of engineers, technologists and technicians executing larger or more complex groups of projects and for ensuring that the engineering conducted on their projects is in accordance with company and customer mandated processes, procedures and standards.

### **Program Management**

This is the project or program management stream. As project or program managers progress through this stream they become responsible for the planning and execution of larger or more complex groups of projects and the line management of larger teams of engineers, technologists and technicians. In particular, program managers will be responsible for ensuring that their projects are completed on time and on budget whilst adhering to company processes and procedures and for securing follow-on work from their respective customers.

### **Designer / Developer**

This is a purely technical stream that will primarily be for software developers and CAD designers who do not possess the necessary educational or professional qualifications to be designated as engineers or technologists. As designers/developers progress through this stream they become increasingly responsible for providing expert design and development input to projects and utilising more innovation and creativity to solve increasingly difficult and diverse design problems.

### **Technologist**

This is a purely technical stream. As technologists progress through this stream they become increasingly responsible for providing expert technological capability to projects and utilising more initiative and creativity in the execution of their work.

### **Technician**

This is a purely technical stream. As technicians progress through this stream they become increasingly responsible for providing expert and efficient fabrication, analysis and test capability to projects and utilising more initiative and creativity in the execution of their work